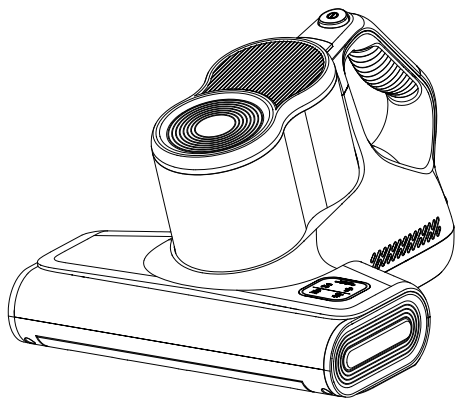




# MULTI-PURPOSE Mattress Vacuum Cleaner **User Manual**



Explore more at *Rosewill*.



# CONTENTS

IMPORTANT SAFEGUARDS	1
PRODUCT DESCRIPTION	4
HOW TO USE	6
CLEANING AND MAINTENANCE	7
TROUBLE SHOOTING	10
WARRANTY	11

# **IMPORTANT SAFEGUARDS**

## **Important**

Before using this product, please read and understand this instruction manual carefully, and keep it in a safe place; this product is only for use in homes or similar places.

## **Danger**

Do not immerse the base in water or any other liquid, and do not rinse under the tap.

## **Warnings**

- This device is not suitable for people with physiological, sensory, or psychological disabilities (including children) or lack of experience, unless there is someone responsible for their safety and supervising their use, or prior notice is provided. It provides guidance on the use of the machine.
- Please be sure to supervise children to ensure that they do not use this device as toys. Children are not allowed to use this product for play.
- Children are not allowed to be responsible for cleaning and maintaining this product, but children aged eight and above can be responsible for it under adult supervision.
- Please keep this product and power cord out of reach of children under the age of eight.
- The weight of the product may vary due to factors such as transportation, external environment (humidity, temperature), etc.

## Warnings

- Do not place the vacuum cleaner near heat sources, radiation, or burning cigarette butts. It is strictly prohibited to inhale the following objects:
  1. All liquids such as water and solvents;
  2. Construction dust and garbage such as lime and cement ash;
  3. Heating objects, such as unextinguished carbon butts and cigarette butts;
  4. Sharp fragments, such as glass;
  5. Flammable and explosive materials, such as gasoline or alcohol products.
- Only authorized technicians are allowed to disassemble this product, and it is strictly prohibited to disassemble this product by without any guidance or instructions.
- It is strictly prohibited for children, disabled individuals, or those lacking knowledge and experience in using household appliances without the guidance of a dedicated person using this product!
- This product is an indoor household product, please do not use it outdoors.
- This product is an electric appliance and must be used under normal operating conditions. Do not let it working alone without supervision.
- Do not touch power cords or sockets when your hands are wet.
- When the dust cup is full, please empty it before using this product.
- When cleaning, repairing, or temporarily not using this product, the power must be cut off.
- Never immerse the vacuum cleaner in water, avoid approaching heating appliances or exposing it to direct sunlight to prevent fires.

## Warnings

- When cutting off the power, do not pull the power cord. Use your hand to hold the plastic part of the plug and unplug it.
- Do not let the power cord pass through sharp objects to avoid damaging the power cord.
- Do not drag the power cord to move the vacuum cleaner.
- Check and confirm that the power supply voltage must be consistent with the voltage used by the vacuum cleaner.
- Avoid running for a long time with the suction port blocked to prevent motor damage and overheating.
- In the following situations, please do not use a vacuum cleaner and promptly send it to the designated repair department of our company for maintenance:
  1. Falling and showing obvious damage or abnormal operation;
  2. The power cord is damaged.
- If the power cord is damaged, in order to avoid danger, it must be repaired by the manufacturer, their repair department, or similar department.

# PRODUCT DESCRIPTION

## Removal Of Package

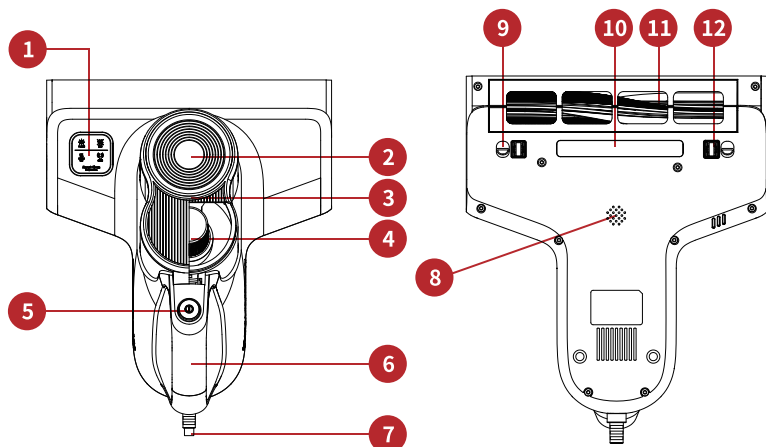
Open the package, take out the foam, hold the machine and take it out from the foam. Take off the outer bag, all the built-in parts and accessories, please keep the outer package for future transportation needs.

## Specification

Model	RHVC-24001, RHVC-24002, RHVC-24003
Volume	600ML
Voltage	120V ~ 60Hz
Rated Power	450W
Dimensions	LxWxH: 308x264x200mm (12.13"x10.39"x7.87")
Weight	1.7kg (3.75lb)

## Function Display Panel





**1.** Function display panel

**3.** Transparent dust cup

**5.** On/Off button

**7.** Power cord

**9.** Roller brush cover lock

**11.** Rolling brush

**13.** Hot air outlet

**2.** Dust cup cover

**4.** Cyclone filter

**6.** Handle

**8.** Ultrasonic

**10.** UV lamp

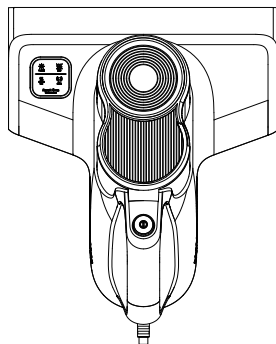
**12.** Micro switch



# HOW TO USE

## Power On

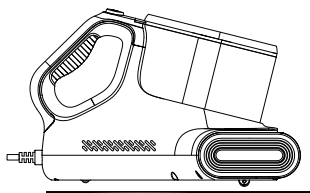
Before use, please check and make sure the dust cup and cyclone filter is assembly well on the product. Insert the plug into the socket, press the On/Off button above the handle, and the machine will start working.



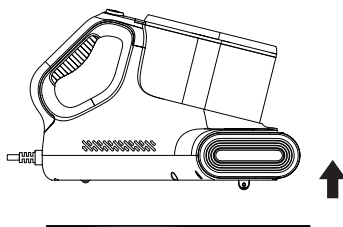
## NOTE:

When the machine is working, the display screen will show the status of various functions of the machine. When it is close to the surface that needs to be vacuumed, the UV indicator light on the display screen will light up, and the UV light will work. When the machine is lifted, the UV indicator light will turn off, and the UV light will not work. The UV light has ultraviolet rays, which can cause eye damage. This function is designed to protect consumers' eyes.

\*Do not look into the UV lamp. The ultraviolet rays of the UV lamp will cause visual damage.



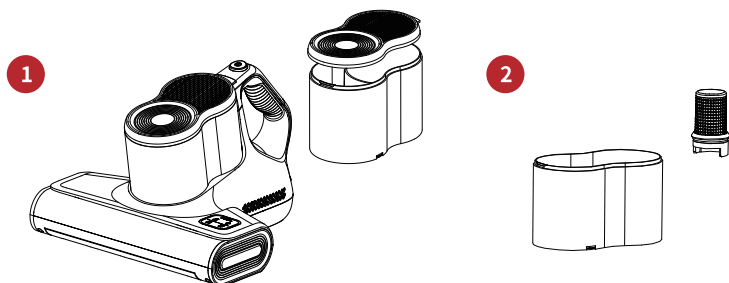
UV Lamp on



UV Lamp off

# CLEANING AND MAINTENANCE

## Clean the Dust Cup and Filter

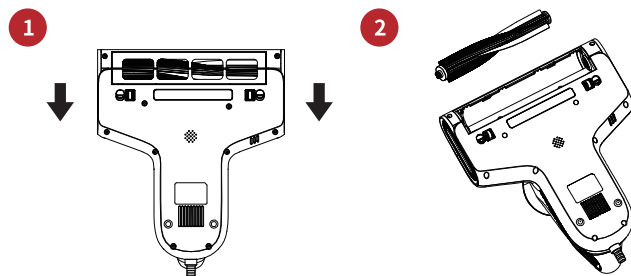


1. Firstly, hold the product with one hand, then hold the dust cup with the other hand to pull it out of the product.
2. Secondly, remove the dust cup lid by open the buckle on the edge, Then take the metal mesh and HEPA filter out from the dust cup to clean.

## Assemble the filter

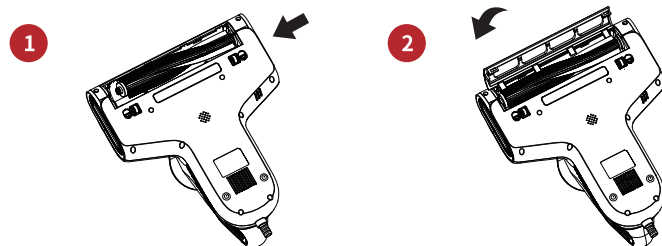
- Clean the HEPA filter under the faucet, note that the water temperature should not exceed 40°C.
- Leave it for at least 24 hours and ensure it is completely dried.
- Retrieve the dried HEPA filter and reinstall it into the cyclone component.
- Grasp the cyclone component and reinstall it onto the machine.
- It is recommended to replace the HEPA filter every three months. If frequently used, the replacement cycle can be shortened according to actual usage.
- You can also clean the HEPA filter regularly and use it after the filter is completely dried and reinstalled.

## Clear the Blockage inside the Brush Head



1. Push the roller brush cover lock in the direction of the arrow to remove the cover.
2. Then remove the roller brush and clean it. Check and remove the tangled blockages on the roller brush.

## Install Roller Brush



1. Install on end of the roller brush into the right side first, then place the roller brush firmly in the slot.
2. Insert the front buckle of the roller brush cover into the machine, and then flip it inward and downward. When you hear a "click" sound, it means it is installed in place.

## Maintenance

- In order to maintain the suction of the vacuum cleaner, please clean the dust regularly.
- In order to avoid affecting the operation of the brush, please clean and maintain when the brush is tangled or dirty.
- When cleaning the main body of this product, please use a dry cloth and do not use chemical solvents such as gasoline, alcohol, etc., otherwise the shell may crack or fade. Dust cups, filters, HEPA filters, etc. should be cleaned with water and dried before use.
- When cleaning and repairing the machine, please turn it off first.
- When there is a lot of garbage in the dust cup, please clean it up in a timely manner to ensure smooth air outlet and avoid blockage that may cause a decrease in suction or motor overheating.
- The ambient temperature of this product ranges from 0°C to 40°C. Please store the machine in a cool and dry place.

# TROUBLE SHOOTING

Problems	Solution
The machine doesn't work	<ul style="list-style-type: none"><li>• The temperature protection switch works, if the temperature rises too high, the temperature protection switch will shut down.</li><li>• Please empty the garbage in the dust cup and check whether have blockage, clean the filter assembly and let the machine cool for 5 seconds.</li></ul>
The UV light doesn't work	The machine is too far away from the cleaning surface.
The machine cannot vacuum	<ul style="list-style-type: none"><li>• The filter assembly is not installed properly</li><li>• Filter is blocked, need to clean the filter.</li><li>• Dust cup blocked, check and clean the dust cup.</li><li>• Only use under proper voltage.</li></ul>
The roller brush head does not turn	If the roller brush is overloaded and blocked. It is necessary to remove the roller brush head to clear the blockage, and then install it. Start the machine and continue to use.
Dust drop down from the Machine	Filter clogging, clean the filter.

# WARRANTY

## Register One (1) Year Limited Warranty

This One (1) Year Limited Warranty applies to purchases made from authorized retailers of Rosewill Inc. ("Rosewill") by the original appliance owner and is not transferable. Please visit [www.rosewill.com](http://www.rosewill.com) to register your new Rosewill appliance. Failure to register your product will not diminish your warranty rights. You will be asked to provide the store name, date of purchase, model number (found on the back of your appliance) and serial number (found on the bottom of your appliance) along with your name and email address.

## Warranty Service

To obtain warranty service, please contact our Consumer Care Department by email to [techsupport@rosewil.com](mailto:techsupport@rosewil.com) or call to 1-800-575-9885. We will try to contact you as soon as possible. If we are unable to resolve the problem, you may be asked to send your appliance to the Service Department for quality inspection. Rosewill is not responsible for shipping costs related to warranty service. When returning your appliance, please include your name, mailing address, email address, phone number, and proof of the original purchase date as well as a description of the problem you are encountering with the appliance.



Appliances need to be disposed of separately for scrap. Throwing them directly into the garbage is prohibited.








Explore more at ***Rosewill.***

## Technical Support Information

---

 [techsupport@rosewill.com](mailto:techsupport@rosewill.com)     1-800-575-9885     [www.rosewill.com](http://www.rosewill.com)

Thank you for purchasing a quality Rosewill product.

Please register your product at [www.rosewill.com](http://www.rosewill.com) for complete warranty information and support for your product.